

XM20 T ATEX Z22 II3D



Z 2 2 I n d u s t r i a l v a c u u m s

TECHNICAL DATA

	Units	XM20 T ATEX Z22 II3D
Suction type		Side channel blower
Turbine Atex Certification		3G/D 3c T 125°C
Power	kW-HP	1,1 – 1,4
Voltage Frequency	V Hz	230 50/60
Maximum vacuum	mBar	250
Vacuum in continuous run	mBar	200
Air flow	m³/h	170
Inlet	Ø mm	50
Noise level - EN ISO 3744	dB(A)	72
Bin capacity	Lt	20
Dimensions	mm	516x545
Height	mm	1050
Weight	Kg	35
Primary Filter		
Type		Cartridge
Surface area Diameter (Class En 60335-2-69)	cm² mm	30.000 305
Media		M
Filter cleaning system		Polyester Antistatic JetClean®
Upstream absolute filter – Optional		
Surface area (Class – EN 1822)	cm²	22.000
Media		H14 Fiberglass



XM20 T ATEX Z22 II3D

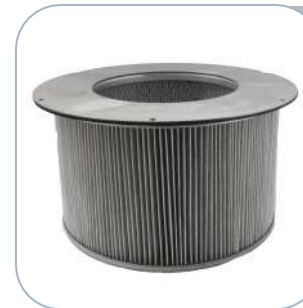


Z 2 2 I n d u s t r i a l v a c u u m s



SUCTION UNIT

The suction unit is made in Italy side channel blower with direct coupling between motor and impeller. The turbine is ATEX Certified II 3G/D 3c T125°C. Moreover, to guarantee a safe work, the unit is equipped with a safety valve that in case of obstruction avoid an eventual overheating of the motor.



ANTISTATIC M CLASS CARTRIDGE

The filtration is guaranteed by an antistatic polyester cartridge filter. The cartridge is made to keep a huge filter surface in a compact space. In this way the air can pass through also when the filter is dirty. The cartridge is in M Class (BIA | En 60335-2-69) certified. It means that all particles till 1 micron are stopped by the filter so as to protect the turbine and the operator around the vacuum cleaner.



JetClean® FILTER CLEANING SYSTEM

The vacuum cleaner is equipped with a new filter cleaning system named JetClean® designed by Depureco. Thanks to the different pressure between the outside and the inside of the vacuum cleaner, the system generates a jet flow through the cartridge, detaching the dust from filter surface. It is a fast and efficient way to keep the filter clean during the work, without stopping the motors.



COLLECTION BIN

The collected material is stocked inside a stainless steel AISI 304 container in order to avoid any spark that could be generated by the electrostatic charge. Behind the vacuum cleaner, there is a metal handle that permits to drop down the bin. The bin can be easily moved away thanks to 4 pivoting industrial wheels. Each wheel is located on a reinforced support to guarantee the best stability during the movement.

OPTIONAL AVAILABLE

- | | |
|---------|---|
| HEPA 14 | Absolute Filter (EN 1822-5) |
| GX | Stainless steel container + chamber AISI 304 |
| TX | Stainless steel container + chamber + structure AISI 304 Polished |